



OBSERVATORY FAN & RGB CONNECTION

WEBSITE

INCLUDED IN PACKAGE

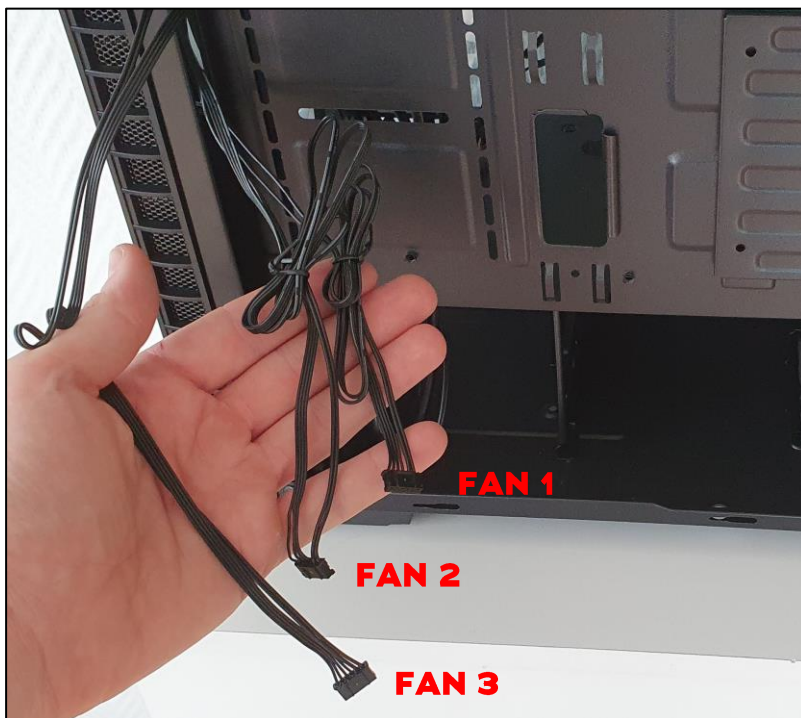
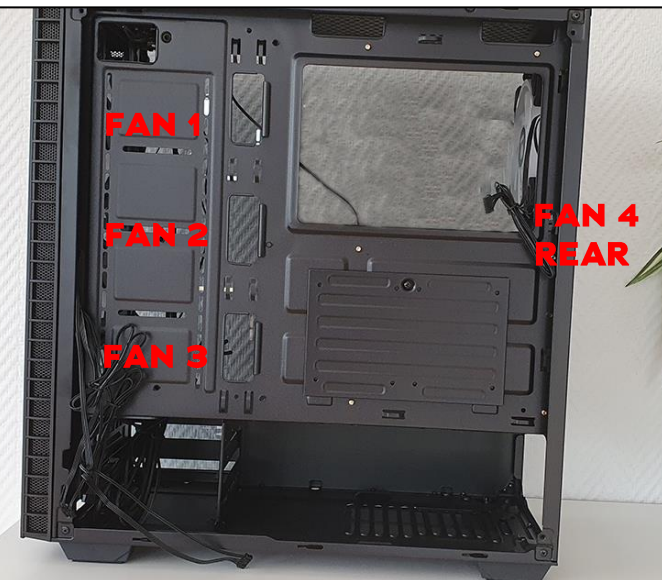


CONTROLLER
MANUAL

RGB
CONTROLLER

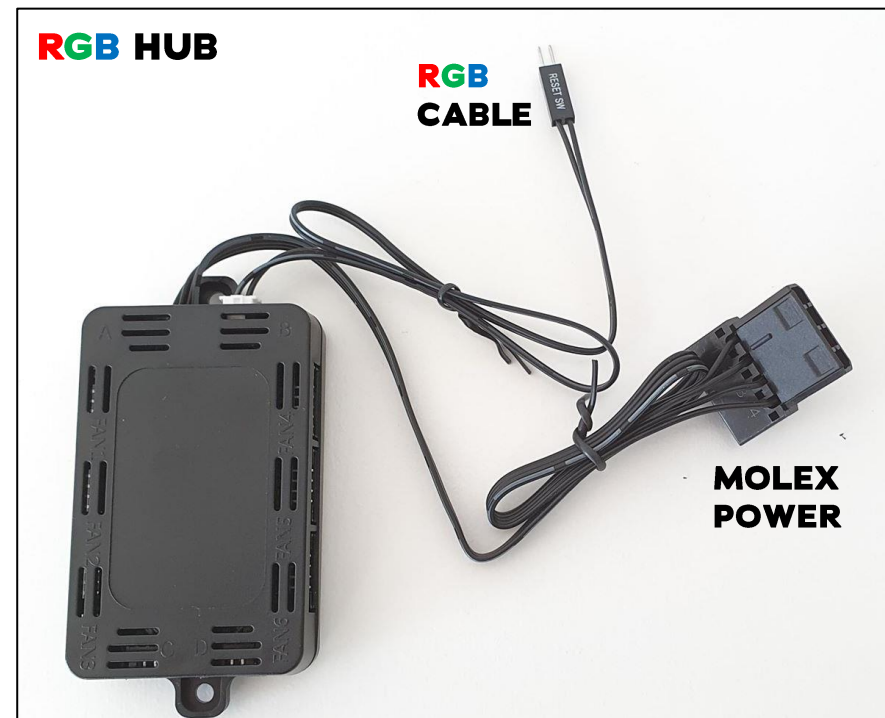


RGB HUB



I/O PANEL

RGB BUTTON



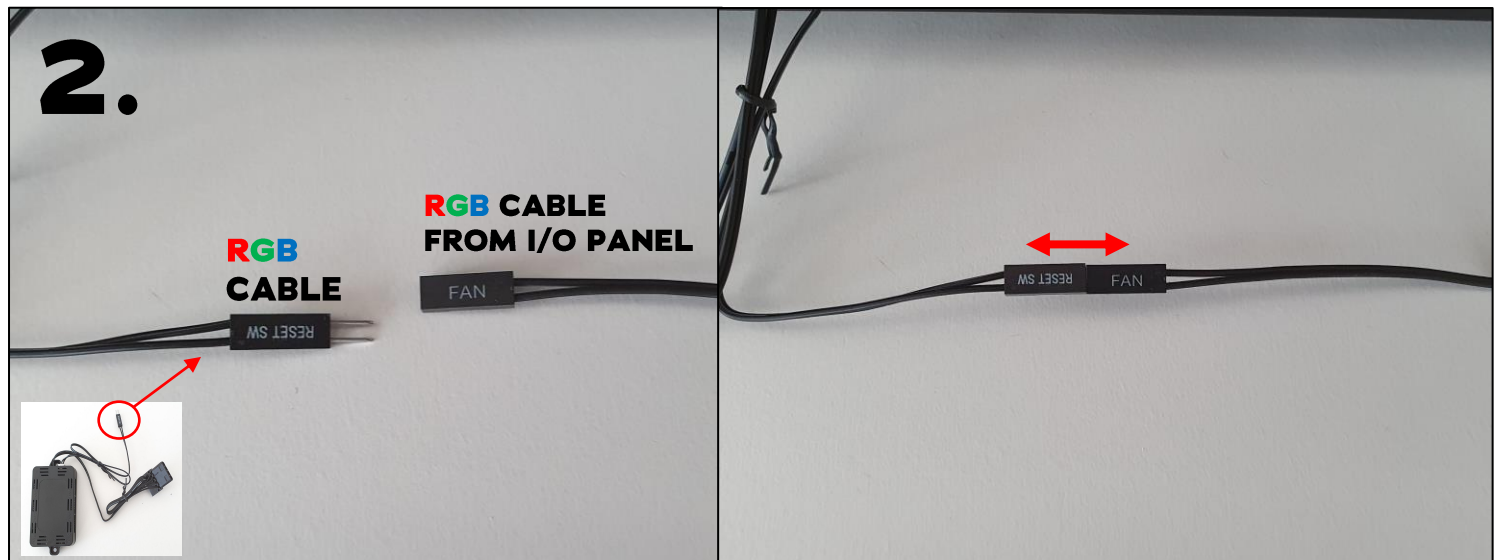
RGB HUB

RGB
CABLE

MOLEX
POWER



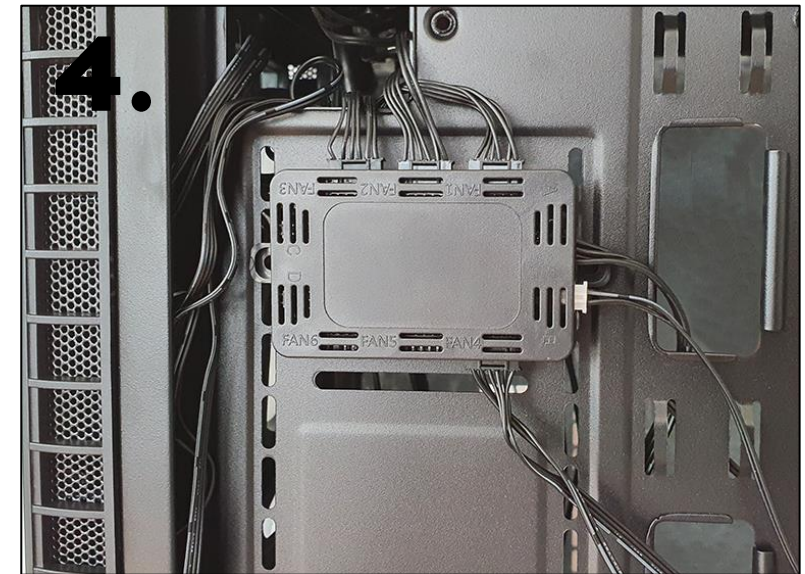
1. Connect fan cables to RGB HUB accordingly. Numbers are visible on the HUB for assistants.



2. Connect RGB Cable from controller to the RGB cable from the I/O Panel



3. Connect the Molex Power from the controller to your PSU



4. Attach HUB accordingly